



Pittsfield Charter Township Department of Public Safety

6227 West Michigan Avenue, Ann Arbor, MI 48108
Phone: (734) 822-4911 • Fax: (734) 944-0744
Website: www.pittsfield-mi.gov

Matthew E. Harshberger
Director of Public Safety
harshbergerm@pittsfield-mi.gov
(734) 822-4921

Mandy Grewal, Supervisor

Bi-Weekly Public Safety Activity Summary February 12th- 25th, 2017

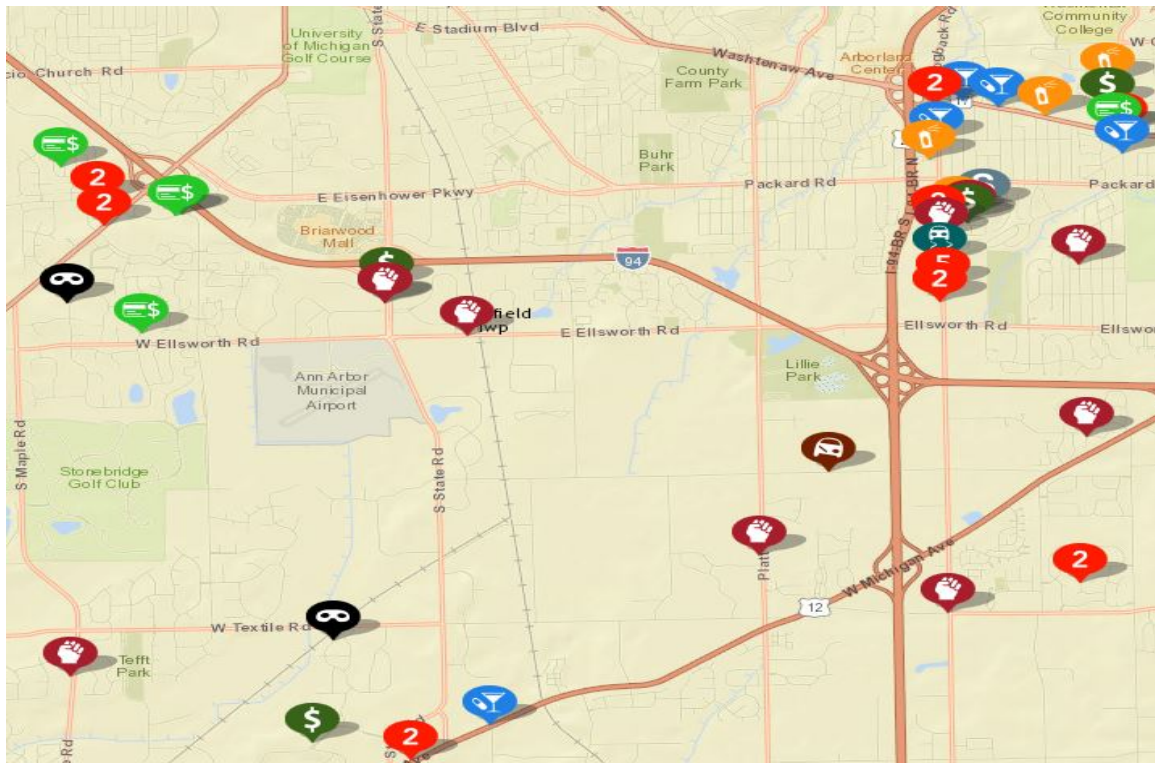
"Click the image below for Two (2) Weeks of CrimeMapping details"



CrimeMapping.com Map- click on "show reports / print" for details.

February 12th- 25th, 2017, showing crime types: *Arson, Assault, Burglary, Disturbing the Peace, Drugs / Alcohol Violations, DUI, Fraud, Homicide, Motor Vehicle Theft, Robbery, Sex Crimes, Theft / Larceny, Vandalism, Vehicle Break-In / Theft, Weapons*


The below named incidents remain under investigation. If anyone has any information about or has been a witness to any of these crimes, please contact the Pittsfield Township Department of Public Safety at 734-822-4911 or the confidential tip line at 734-822 4959. Residents are encouraged to sign up for Pittsfield Township alerts and department notices through "Notify Me". Please go to www.pittsfield-mi.gov to sign up.



Gordon Schick
Deputy Chief of Police
(734) 822-4923
schickg@pittsfield-mi.gov

Sean Gleason
Fire Chief
(734) 822-4926
gleasons@pittsfield-mi.gov

Navigating the new Crime Mapping website for details

(To access information: ✓ -the Police badge,  under visible agencies
✓ - the box for the Pittsfield Twp. map, ✓ -show only records from this agency, ✓ - on Reports for details)

CrimeMapping Alerts / Notices of “verified reported incidents” in your neighborhood:

This tool provides accurate information on “reported incidents” in real time from 500 ft. to 2 miles from your home. You can also access the Sex Offender’s registry. Residents can get the alerts by email / text, sign up today.

Home Invasion Prevention Safety Tips: Residents / business owners are encourage to “practice and implement steps to not be a victim of a crime”. It’s important to have and use the security system in your home. As a business owner avoid keeping cash in your home and if you do business from your home make sure you are in compliance with the Township’s Code Enforcement and your Homeowners Association if you are in a planned subdivision.

Residents are encourage to report suspicious vehicles or persons around or at a home when neighbors are at work or away. If you are planning to travel please complete the “Property Check” online form that can be found at the Township website.

Crime Prevention Safety Tips

Suspicious Situations to Be Aware Of:

- Subjects who knock on the door or start to walk in and tell you they are looking for a friend, but a person by that name does not and has not lived there.
- Subjects asking for bottles and cans.
- Subjects who don’t belong at your residence “hanging out” on the porch.
- Subjects seen in the area walking between houses or looking into cars.
- Subjects asking you if you would like to buy electronics or merchandise on the street.
- Be aware of your environment, if you see suspicious persons or vehicles, report it to the police immediately!

Vacation Property Check

- When you leave for a vacation or break make sure that your doors and windows are locked.
- Notify your neighbors the dates you will be gone, and a number where you can be reached in the event of an emergency.
- Have a friend that is staying in town check on your residence.
- Take valuables with you or secure them.
- Close blinds and curtains so that people cannot see into your residence.
- Have someone pick up your mail and newspapers or stop delivery until you return.
- Sign up for the free “Property checks”, access from www.pittsfield-mi.gov (Public Safety page)

Burglary /Home Invasion prevention tips

- Lock your doors and windows. Use your alarm system, install external lights that are on solar cells.
- Replace your strike plate screws with 2 ½” - 3” screws, so that they are secured into the doorframe.

- Install “Locking Pins” on double hung windows, and check for “aftermarket” security products for sliding glass windows and doors.
- Remove valuables from in front of windows or keep blinds /curtains closed. Keeping valuables out of sight is probably the single most important thing. If they don’t see anything valuable, they will move on until they find someone’s house where these precautions weren’t taken.
- Do not leave purses and wallets on counter tops and on tables in the main areas of the house. Secure them in bedrooms or other secure locations.
- Do not store empty cans and bottles on your porch. This may attract subjects to your home.
- Engrave your property with a number or letters that will be easily identifiable to you if your property is stolen and recovered. IT is recommended that the driver’s license number or state ID number be used.
- Password protect cellular phones, laptops, tablets, and desktop computers. Shred financial information before throwing out in the trash.
- Take pictures of your property and keep them in a safe deposit box or at a safe location away from your home.

Sign up for crime alerts through www.crimemapping.com and for emergency notifications, including weekly public safety activity reports, through

www.pittsfield-mi.gov/notifyme

