



# Pittsfield Charter Township

Department of Public Safety

6227 West Michigan Avenue, Ann Arbor, MI 48108  
Phone: (734) 822-4911 • Fax: (734) 944-0744  
Website: [www.pittsfield-mi.gov](http://www.pittsfield-mi.gov)

**Matthew E. Harshberger**  
Director of Public Safety  
[harshbergem@pittsfield-mi.gov](mailto:harshbergem@pittsfield-mi.gov)  
(734) 822-4921

**Mandy Grewal, Supervisor**

## Bi-Weekly Public Safety Activity Summary

November 26<sup>th</sup> – December 9<sup>th</sup>, 2017

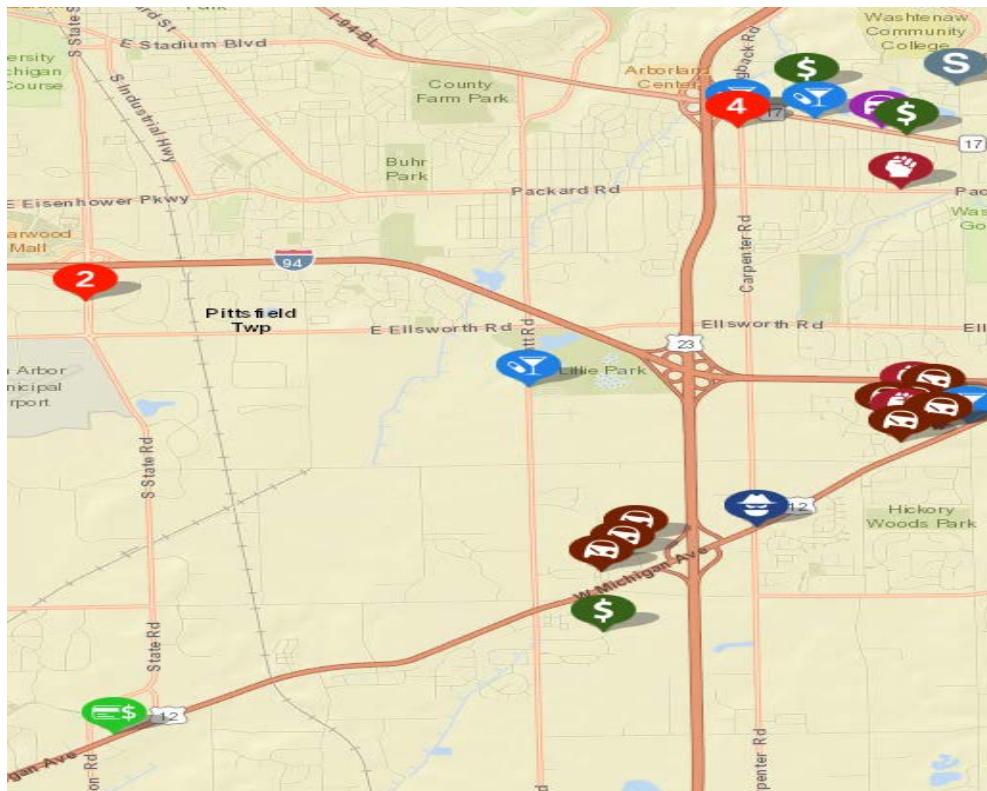
**"Click the image below for Two (2) Weeks of CrimeMapping details"**



CrimeMapping.com Map- click on "show reports / print" for details.

November 26<sup>th</sup> – December 9<sup>th</sup>, 2017, showing crime types: **Arson, Assault, Burglary, Disturbing the Peace, Drugs / Alcohol Violations, DUI, Fraud, Homicide, Motor Vehicle Theft, Robbery, Sex Crimes, Theft / Larceny, Vandalism, Vehicle Break-In / Theft, Weapons**

The below named incidents remain under investigation. If anyone has any information about or has been a witness to any of these crimes, please contact the Pittsfield Township Department of Public Safety at 734-822-4911 or the confidential tip line at 734-822 4959. Residents are encouraged to sign up for Pittsfield Township alerts and department notices through "**Notify Me**". Please go to [www.pittsfield-mi.gov](http://www.pittsfield-mi.gov) to sign up.



**Gordon Schick**  
Deputy Chief of Police  
(734) 822-4923  
[schickg@pittsfield-mi.gov](mailto:schickg@pittsfield-mi.gov)

**Sean Gleason**  
Fire Chief  
(734) 822-4926  
[gleasons@pittsfield-mi.gov](mailto:gleasons@pittsfield-mi.gov)

## Navigating the new Crime Mapping website for details

*(To access information: ✓ -the Police badge,  under visible agencies  
✓ - the box for the Pittsfield Twp. map, ✓ -show only records from this agency,-✓ - on Reports for details)*

### CrimeMapping Alerts / Notices of “verified reported incidents” in your neighborhood:

This tool provides accurate information on “reported incidents” in real time from 500 ft. to 2 miles from your home. You can also access the Sex Offender’s registry. Residents can get the alerts by email / text, today.

Sign up for crime alerts through [www.crimemapping.com](http://www.crimemapping.com) and for emergency notifications, including weekly public safety activity reports, at [www.pittsfield-mi.gov/notifyme](http://www.pittsfield-mi.gov/notifyme)

### **Pittsfield Township Department of Public Safety: “Dispatch Operations moving to Washtenaw County Metro Dispatch and Huron Valley Ambulance” January 1, 2018**

The Pittsfield Township Department of Public Safety will join other agencies throughout Washtenaw County by moving Police Dispatch operations to the Washtenaw County Sheriff’s Office (Metro Dispatch) Regional Dispatch Center and Fire Dispatch operations to Huron Valley Ambulance. Due to the reduction in Michigan’s revenue sharing to local municipalities and the push for consolidation of public services, this move gives the Township time to make the necessary fiscal adjustments for providing the best police and fire services to the community. Pittsfield Township will continue to have their police and fire personnel dispatched to all calls for service; the only change will be where the dispatch services occur.

Pittsfield Fire will be dispatched by Huron Valley Ambulance beginning October 30, 2017 and Pittsfield Police will be dispatched by Washtenaw County Metro Dispatch beginning January 1, 2018, which will complete our transition to the regional dispatching model.

Residents are encouraged to sign up for alerts through “NotifyMe” at the township website, [www.pittsfield-mi.gov](http://www.pittsfield-mi.gov) and to also sign up for crime alerts from CrimeMapping to stay informed about reported crime in your neighborhood at [www.crimemapping.com](http://www.crimemapping.com).

#### **Accessing services at the Department of Public Safety:**

- Front Desk assistance; there will be personnel at the DPS front desk to assist with non-emergency calls and walk-in requests for information Mon-Fri, during regular business hours (or longer).
- Records Department hours of operation remain Mon-Fri from 8 a.m. – 4 p.m. Please call for assistance at 734 822-6062.
- At all three Department of Public Safety Buildings; After hours call box will be available to request assistance for emergency and non-emergency calls 24 hours a day (dials directly to Metro Dispatch).
- A telephone in the main station (6227 W. Michigan Ave.) lobby will also be available to call for assistance during open lobby hours if needed.

#### **Residents will still have access to the following services:**

- Walk-in services at the police department (filing police reports and obtaining general assistance) will continue same as before. A support services assistant or responding officer will provide assistance as needed.
- Vacation Property Checks (filed online at the township website).
- Filing police reports online: **please review the guidelines on what types of crimes can be reported through this system** (online at the township website), [www.pittsfield-mi.gov](http://www.pittsfield-mi.gov)
- Requests regarding services or questions can be sent to: [publicsafety@pittsfield-mi.gov](mailto:publicsafety@pittsfield-mi.gov)
- Code Enforcement issues / concerns please call 822-2121.

These guidelines will be reviewed and updated as we progress through the transition. Thank you for your patience and understanding.