



Pittsfield Charter Township

Department of Public Safety

6227 West Michigan Avenue, Ann Arbor, MI 48108

Phone: (734) 822-4911 • Fax: (734) 944-0744

Website: www.pittsfield-mi.gov

Mandy Grewal, Supervisor

Matthew E. Harshberger

Director of Public Safety

Chief of Police

harshbergerm@pittsfield-mi.gov

(734) 822-4921

Sean Gleason

Fire Chief

gleasons@pittsfield-mi.gov

(734) 822-4926

Bi-Weekly Public Safety Activity Summary

August 6th – 19th, 2018

"Click the image below two weeks of CrimeMapping details"



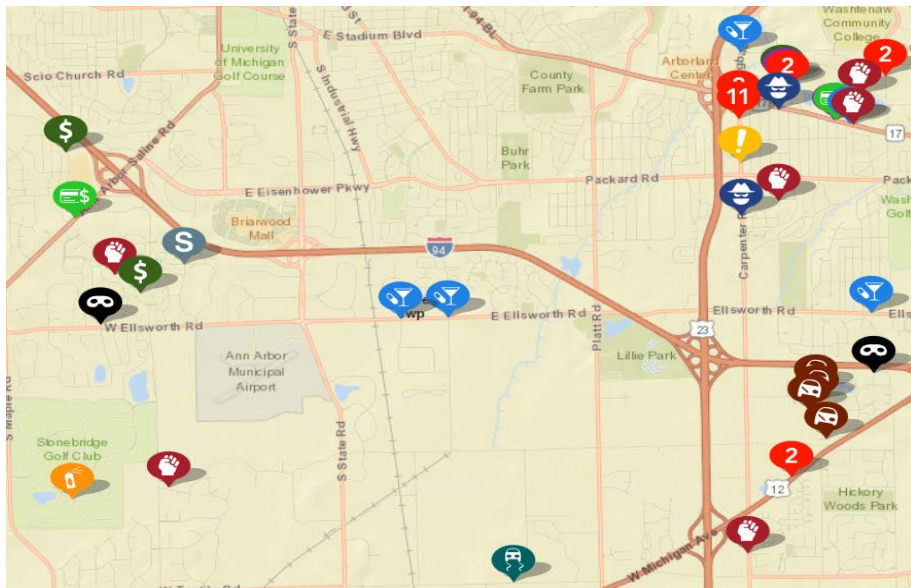
CrimeMapping.com Map- click on "show reports / print" for details.

August 6th-19th, 2018, showing crime types: **Arson, Assault, Burglary, Disturbing the Peace, Drugs / Alcohol Violations, DUI, Fraud, Homicide, Motor Vehicle Theft, Robbery, Sex Crimes, Theft / Larceny, Vandalism, Vehicle Break-In / Theft, Weapons**

The below named incidents remain under investigation. If anyone has any information about or has been a witness to any of these crimes, please contact the Pittsfield Township Department of Public Safety:

- Confidential TIP line: 734-822-4958 (Detective Bureau)
- General Information: 734-822-4911 (Front Desk)
- Request Police Response: 734-994-2911 (Metro Dispatch)

Residents are encouraged to sign up for Pittsfield Township alerts and department notices through "Notify Me". Please go to www.pittsfield-mi.gov



“Meet Me at the Neighborhood Watch Pop-up”



Goal: Meet with residents in their *neighborhood* on their *street* or at a designated home to provide information on public safety watch programs and how they get emergency notifications. Engage residents in addressing concerns about safety in their community and being the eyes & ears to report suspicious persons or vehicles.

- Time 6:30-7:30pm / Date / Time/ Location—TBD

-Provide information on crime /fire trends and how to use CrimeMapping for alerts and encourage residents to sign up for *Notifyme* (text or email) notices.

- Social media, which of the formats do they communicate w/ their neighbors, about safety concerns?

Facebook, NextDoor, website, Email, or other format.

Contact: Ritchie Coleman, PSCC @ 734 822- 4959, colemanr@pittsfield-mi.gov

CPU Officer Matt Bartus @734 822-6054, bartusm@pittsfield-mi.gov

