

*your lines. your lights.  
your commitment.*



## Capital Project Profile: State-Pioneer Transmission Line Project

ITC Michigan, through its ITC *Transmission* subsidiary, will construct approximately three miles of 120,000 volt (120kV) double-circuit transmission line to connect the State and Pioneer substations. This project will support electric reliability and increase capacity in the Ann Arbor area. Construction is scheduled to begin in late 2017 and will take approximately eight months.

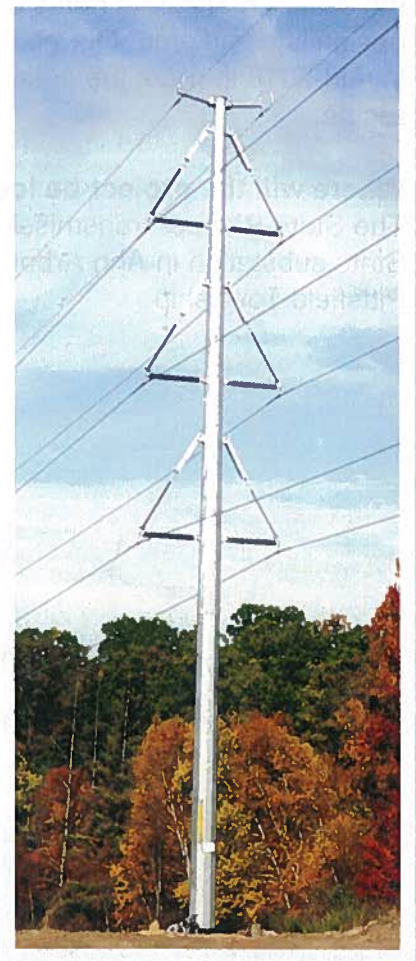
The State-Pioneer project is an example of ITC's ongoing commitment to the operational efficiency and reliability of Michigan's high-voltage transmission grid. The company has invested more than \$3.4 billion in capital project maintenance and transmission infrastructure improvements in Michigan since 2003. These investments are improving the reliability and safety of the transmission infrastructure while ensuring its ability to meet new energy demands.

### Project Approach

ITC's approach to transmission line development takes into consideration the unique nature of every project. Projects are assessed individually for safety, reliability, cost-effectiveness, environmental impacts and community impacts to determine the best transmission solution for each project.

### Public Participation

ITC recognizes the critical role that local residents, landowners and communities play in reviewing and hosting new electric transmission lines. ITC is committed to open, honest and frequent communications with landowners and local governments. We work respectfully with landowners throughout the design and construction process to identify possible routes for the project that minimize impacts to their properties.



*The new State-Pioneer double-circuit monopoles will be similar to the one shown here.*



27175 Energy Way  
Novi, MI 48377

877.ITC.ITC9 (877.482.4829)  
[www.itctransco.com](http://www.itctransco.com)

*we're your energy  
superhighway*

# Capital Project Profile: State-Pioneer Transmission Line Project

## Frequently Asked Questions

### Why is this project necessary?

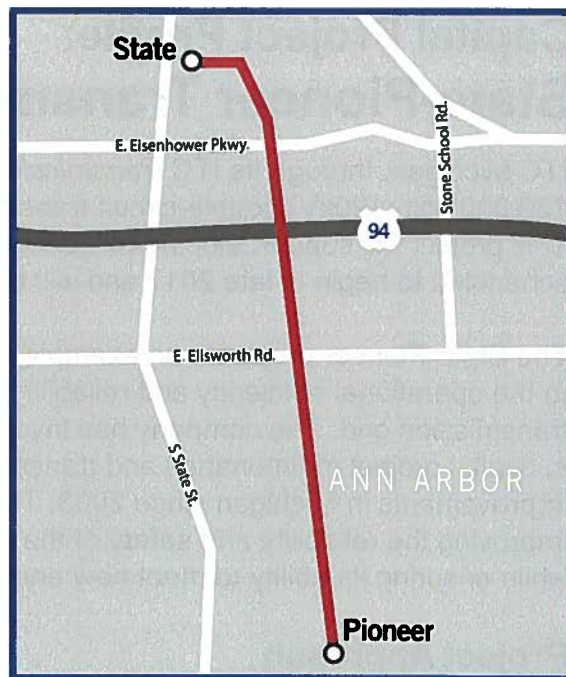
As in much of the United States, the electric infrastructure serving the Ann Arbor area was constructed decades ago and was not built to support modern-day demands. This can lead to inconvenient, and sometimes costly, power outages. The electric system improvements will enhance the reliability of electric service to Ann Arbor residents and businesses, and create additional capacity to support growth throughout the region.

### When will this project start and how long will it take?

Construction will start after the route is determined, all necessary real estate rights are secured and engineering design is completed. Our goal is to complete construction in mid-2018 to meet the anticipated energy needs of the region.

### Where will the project be located?

The State-Pioneer transmission line will extend from the State substation in Ann Arbor to the Pioneer substation in Pittsfield Township.



ITC Holdings Corp., through subsidiaries ITC Transmission and Michigan Electric Transmission Company, LLC (METC), owns and maintains more than 8,700 circuit miles of high-voltage electric lines and 283 transmission stations and substations throughout Michigan's Lower Peninsula. As the nation's largest independent electric transmission company, ITC focuses solely on electric transmission to enhance reliability, relieve electric transmission congestion and connect all energy resources, including renewables, to customers in a non-discriminatory manner. ITC has been making significant investments in Michigan's transmission grid to improve reliability, safety and efficiency and lower the overall cost of delivered energy.



27175 Energy Way  
Novi, MI 48377

877.ITC.ITC9 (877.482.4829)  
[www.itctransco.com](http://www.itctransco.com)

*we're your energy  
superhighway*