



Pittsfield Charter Township

Department of Public Safety

6227 West Michigan Avenue, Ann Arbor, MI 48108

Phone: (734) 822-4911 • Fax: (734) 944-0744

Website: www.pittsfield-mi.gov

Mandy Grewal, Supervisor

Matthew E. Harshberger

Director of Public Safety

Chief of Police

harshbergerm@pittsfield-mi.gov

(734) 822-4921

Sean Gleason

Fire Chief

gleasons@pittsfield-mi.gov

(734) 822-4926

Bi-Weekly Public Safety Activity Summary

October 29th- November 11th, 2018

"Click the image below two weeks of CrimeMapping details"



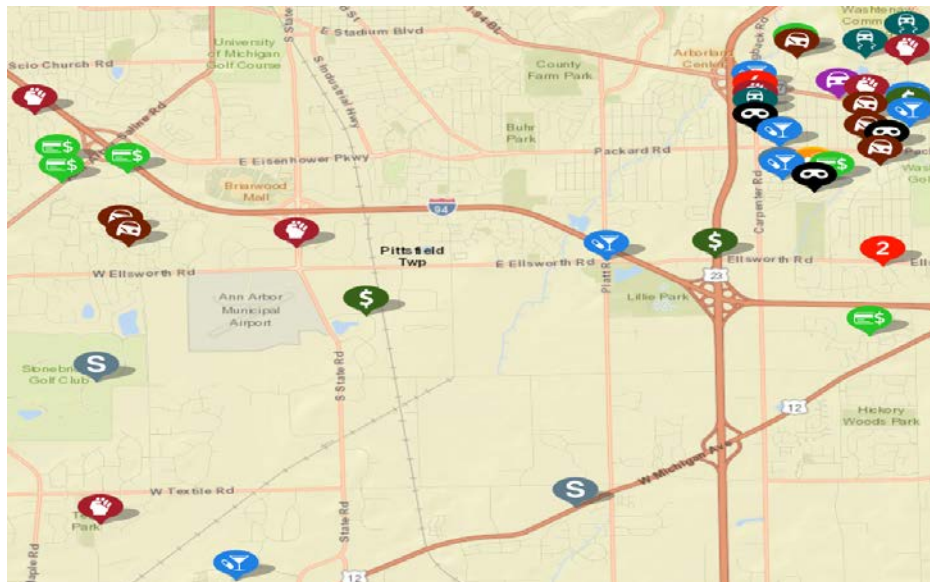
CrimeMapping.com Map- click on "show reports / print" for details.

October 29th – November 11th, 2018, showing crime types: **Arson, Assault, Burglary, Disturbing the Peace, Drugs / Alcohol Violations, DUI, Fraud, Homicide, Motor Vehicle Theft, Robbery, Sex Crimes, Theft / Larceny, Vandalism, Vehicle Break-In / Theft, Weapons**

The below named incidents remain under investigation. If anyone has any information about or has been a witness to any of these crimes, please contact the Pittsfield Township Department of Public Safety:

- Confidential TIP line: 734-822-4958 (Detective Bureau)
- General Information: 734-822-4911 (Front Desk)
- Request Police Response: 734-994-2911 (Metro Dispatch)

Residents are encouraged to sign up for Pittsfield Township alerts and department notices through "Notify Me". Please go to www.pittsfield-mi.gov



Vacation Property Checks:

In the event you are going to be away on vacation, please let the Department of Public Safety know, so that we may be prepared for any emergencies at your residence and can conduct property checks as needed. Please contact the Public Safety Department In the event your absence will be extended or you return home early.

Once you have completed the online form please submit electronically or print and fax, mail, or drop off the form at the Department of Public Safety.

Please click this image to access the online form:



Holiday Shopping / Delivery services. Click on the images below for details on shipping and tracking instructions and tips on when to have items delivery to your home to help avoid packages being stolen.

If you own a video security system such as “Ring, August, SimpliCam, or others” please contact the police if you observe a suspicious person (s) at your home or neighbors attempting to steal a package from a porch.

Informed Delivery[®] by USPS[®]

Digitally preview your mail and manage your packages scheduled to arrive soon! Informed Delivery allows you to view greyscale images of the exterior, address side of letter-sized mail pieces and track packages in one convenient location.*

* Images are only provided for letter-sized mail pieces that are processed through USPS' automated equipment.

